

team title. — Staff Photo by SUSAN TUSA

# Haslett, Fowlerville rule ICL track scene

By AL PALMERI  
Journal Correspondent

HASLETT — Years of frustration were floating out of Scott Felmlee's mind as he finally sprinted a victory lap with his Haslett High girls' track team Wednesday.

Felmlee's girls had spent eight seasons seeking championships in the Capital Circuit and Ingham County League, and eight times they came up empty. Haslett came close to victory last year when it switched to the ICL, but lost to Stockbridge by 20 points.

SO THE VIKINGS had to wait until Wednesday, when they claimed the girls' crown by scoring 99 points. Williamston nipped Perry for second place, 78-77.

Fowlerville's boys finished second in the mile relay and erased a three-point Haslett lead to win their team championship with 105 points. The defending champion Vikings, seventh in the mile relay, finished with 100 points, followed closely by Stockbridge with 92 and Bath with 91.

"We haven't won any boys' sports championships in the four years since I've been at Fowlerville, so it's nice to win," said an elated Gladiator coach Jack Wallace.

BUT THE STORY of Haslett's girls was even more sentimental.

"The eight previous years, I've had seven seconds and a third," Felmlee said. "It's about time, huh?"

Only two of Felmlee's girls — discus thrower Sue Madison and two-miler Kirky Ailee — won individual championships, but superior depth enabled the Vikings to overcome an early lead by Perry and clinch the title before the mile relay.

"We've only got two chances of going to the Honor Roll meet, if our mile relay and our 2-miler go," Felmlee said. "It's indicative of the team — not too many superstars."

WALLACE DIDN'T have many superstars, either, when Fowlerville scored "five or seven points" four years ago in the ICL meet. But three freshmen from that team — Jim Rambo, Tony Rasegan and Bill Marquette — blossomed into major point producers. On Wednesday, those seniors were the heart of Fowlerville's championship effort.

Rambo won the 100-yard dash, placed second in the 220 and anchored the winning 440 and 880 relays. Rasegan won the 220 and long jump, placed second in the 100 and sixth in the 440. And Marquette

placed third in the 440, along with running legs on both sprint relays and the second-place mile relay.

Haslett stayed close by winning four of the five field events and both hurdles behind David Garthe, but the Vikings had little left for the mile relay. Wallace had saved half of the team that holds the school record, Marquette and John Wolverton, who teamed with Rob Costarner and Mike Gorsche to safely follow Bath across the line. Fowlerville was timed in 3:39.2 and never had to worry about Haslett, which finished last in 3:48.7.

Rain soaked the track and slowed times, though Stockbridge's Richard Bradshaw turned in a season-best 2:00.4 in winning the 800. The Panthers dominated the distance events as Bradshaw, Chuck Bumpus, Jon Fillmore and Doug Lance took the first four places in the mile, and Bumpus and Kevin Basore went one-four in the 2-mile.

**INGHAM COUNTY LEAGUE MEET — GIRLS**

100 yards — Haslett 99, Williamston 88, Perry 77, Fowlerville 78, Stockbridge 74, Bath 73, Marquette 72, Stockbridge 71, Williamston 70, Perry 69, Fowlerville 68.

200 yds — Marquette 81, 59.1; Haslett 81, 59.1; Bath 81, 59.1.

400 yds — Marquette 51, 41.0; Perry 51, 41.0; Haslett 51, 41.0.

800 yds — Marquette 1:33.4; Perry 1:33.4; Haslett 1:33.4; Bath 1:33.4; Fowlerville 1:33.4; Williamston 1:33.4.

1,600 yds — Marquette 3:39.2; Perry 3:39.2; Haslett 3:39.2; Bath 3:39.2; Fowlerville 3:39.2; Williamston 3:39.2.

3,200 yds — Marquette 7:21.1; Perry 7:21.1; Haslett 7:21.1; Bath 7:21.1; Fowlerville 7:21.1; Williamston 7:21.1.

6,400 yds — Marquette 14:31.1; Perry 14:31.1; Haslett 14:31.1; Bath 14:31.1; Fowlerville 14:31.1; Williamston 14:31.1.

12,800 yds — Marquette 29:31.1; Perry 29:31.1; Haslett 29:31.1; Bath 29:31.1; Fowlerville 29:31.1; Williamston 29:31.1.

25,600 yds — Marquette 59:31.1; Perry 59:31.1; Haslett 59:31.1; Bath 59:31.1; Fowlerville 59:31.1; Williamston 59:31.1.

50,000 yds — Marquette 1:19:31.1; Perry 1:19:31.1; Haslett 1:19:31.1; Bath 1:19:31.1; Fowlerville 1:19:31.1; Williamston 1:19:31.1.

100,000 yds — Marquette 2:39:31.1; Perry 2:39:31.1; Haslett 2:39:31.1; Bath 2:39:31.1; Fowlerville 2:39:31.1; Williamston 2:39:31.1.

**BOYS**

100 yds — Haslett 105, Williamston 92, Perry 88, Fowlerville 84, Stockbridge 80, Bath 76, Marquette 72, Stockbridge 68, Williamston 64, Perry 60.

200 yds — Haslett 210, Williamston 184, Perry 176, Fowlerville 172, Stockbridge 168, Bath 164, Marquette 160, Stockbridge 156, Williamston 152, Perry 148.

400 yds — Haslett 420, Williamston 368, Perry 352, Fowlerville 344, Stockbridge 336, Bath 328, Marquette 320, Stockbridge 312, Williamston 304, Perry 296.

800 yds — Haslett 840, Williamston 736, Perry 720, Fowlerville 712, Stockbridge 704, Bath 696, Marquette 688, Stockbridge 680, Williamston 672, Perry 664.

1,600 yds — Haslett 1,680, Williamston 1,472, Perry 1,440, Fowlerville 1,424, Stockbridge 1,416, Bath 1,408, Marquette 1,400, Stockbridge 1,392, Williamston 1,384, Perry 1,376.

3,200 yds — Haslett 3,360, Williamston 2,944, Perry 2,880, Fowlerville 2,848, Stockbridge 2,832, Bath 2,824, Marquette 2,816, Stockbridge 2,808, Williamston 2,792, Perry 2,784.

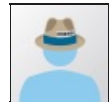
6,400 yds — Haslett 6,720, Williamston 5,888, Perry 5,760, Fowlerville 5,696, Stockbridge 5,664, Bath 5,656, Marquette 5,648, Stockbridge 5,632, Williamston 5,616, Perry 5,608.

12,800 yds — Haslett 13,440, Williamston 11,776, Perry 11,520, Fowlerville 11,392, Stockbridge 11,328, Bath 11,312, Marquette 11,304, Stockbridge 11,296, Williamston 11,280, Perry 11,272.

25,600 yds — Haslett 26,880, Williamston 23,552, Perry 23,040, Fowlerville 22,784, Stockbridge 22,656, Bath 22,624, Marquette 22,616, Stockbridge 22,608, Williamston 22,592, Perry 22,584.

50,000 yds — Haslett 53,760, Williamston 47,104, Perry 46,080, Fowlerville 45,568, Stockbridge 45,312, Bath 45,248, Marquette 45,232, Stockbridge 45,216, Williamston 45,200, Perry 45,192.

100,000 yds — Haslett 107,520, Williamston 94,208, Perry 92,160, Fowlerville 91,136, Stockbridge 90,624, Bath 90,496, Marquette 90,480, Stockbridge 90,464, Williamston 90,448, Perry 90,440.



Clipped By:  
jeffhollobaugh  
Thu, Jul 7, 2022